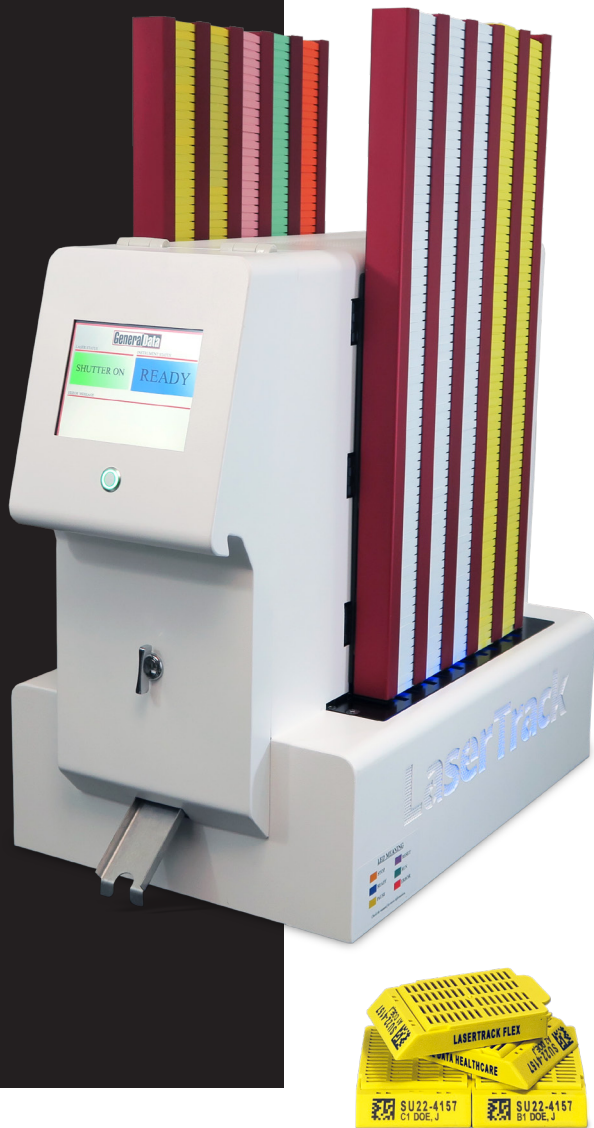


LaserTrack™ FLEX™ Cassette Printer



The Newest Cassette Printing Technology Delivers Flexibility To Accommodate Your Lab's Unique Needs and Workflow

The LaserTrack FLEX is designed for busy and growing histology labs who need flexibility to meet their current cassette printing needs and workflow, with flexibility to upgrade to meet future needs without sacrificing functionality or needing to replace the printer.

The FLEX features LaserTrack's proven laser printing technology that produces clean lines and high-definition text and barcodes. The FLEX also introduces innovative new enhancements that make it a must-have for a modern histology lab workflow.

■ Cassette Capacity Flexibility

The FLEX's variable capacity starts at 480 cassettes, with the ability to upgrade capacity up to 800 cassettes as needed any time after purchase. With the LaserTrack FLEX, you can keep up with your lab's growing case volume without the need to replace the printer.

■ Print Area Flexibility

The LaserTrack FLEX prints razor-sharp text and barcodes that deliver a 99%+ first time scan rate. The FLEX's standard configuration prints on the face of the cassette. It can be upgraded any time after purchase to additionally print on one or both sides of the cassette.

■ Small Footprint + Workflow Layout Flexibility

The footprint of the LaserTrack FLEX measures only 13" L x 19" D. Cassettes can be loaded on either the right or left side, so you can position the FLEX where it best fits your lab's layout and workflow.

■ LIS Connectivity Flexibility

The FLEX software has a user-friendly interface for full operational control of the printer. It also easily interfaces with LIS systems including Epic® Beaker®, Cerner® CoPathPlus®, Sunquest CoPathPlus™, SoftLab® and others.

LaserTrack FLEX Cassette Printer Specifications

Dimensions: LxDxH	(13 x 19 x 29) (330 x 483 x 737) (in) (mm)	Characters	Alphanumeric, linear barcode or 2D Datamatrix barcodes
Weight: lbs, kg	88 lbs; 40 kg	Network Connection	USB, LAN
Voltage	100 – 240V, 50/60Hz, 3A The main power supply voltage fluctuations should not exceed ±10%.	Print Area Options	Front only (standard) Front + one side (upgrade at any time) Front + two sides (upgrade at any time)
Number of Magazines	6 – 10 depending on desired cassette capacity Number of cassette magazines is field- upgradeable at any time after purchase Each magazine holds up to 80 cassettes	Linear Cassette Movement (LCM)	Cassettes move in a linear motion inside the instrument, minimizing the potential for jamming. No turning, twisting or rotating motions ensures smooth operation and fast printing.
LIS Connectivity	Cerner® CoPathPlus® Epic® Beaker® Sunquest CoPathPlus™ SoftLab® Other LIS/LIMS systems	Designed For Service	Access panels are located on the front and both sides of the instrument for easy access by service technicians.

LaserTrack FLEX Cassettes

LaserTrack cassettes are specifically designed and optimized for use in LaserTrack cassette printers. These histology cassettes are resistant to most histological solvents, and their slots offer maximum flow through for good fluid exchange and proper drainage. Their design results in effective movement within the cassette printer that reduces jamming and produces optimal barcode scan rates of nearly 100% for worry-free scanning in the lab.



Slotted Cassettes



Large Square Hole
Cassettes



Small Square Hole
Cassettes



Chambered
Cassettes



Large Round Hole
Cassettes

LaserTrack cassettes are available in various colors, styles and packaging options. See www.general-data.com/cassettes for complete information.

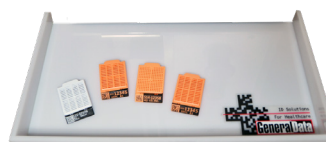
LaserTrack FLEX Cassette Printer Accessories

LaserTrack DUO Cassette Management System



- Organizes cassettes and distributes them to the right or left side as they are printed.
- Extension trays can also be attached to both the right and left side of the DUO, and can be easily removed after printing.

LaserTrack Cassette Collection Tray



- Convenient tray collects cassettes as they are printed.
- Durable, easy-to-clean material that is ideal for lab use.

©2024 General Data Company, Inc. All Rights Reserved. Specifications are current at the time of publication; however, they are subject to change without notification. All trademarks and registered trademarks are property of their respective owners.



General Data Company, Inc.
4354 Ferguson Drive Cincinnati, OH 45245
844.643.1129 talktous@general-data.com
www.general-data.com/healthcare

Get More Information

www.general-data.com/flex

844-643-1129