

# Xerox® VersaLink® C8000W Color Printer Featuring White Toner

Explore new opportunities in the world of color printing with dark media



C8000W

xerox™

# Introducing Xerox® VersaLink® C8000W Color Printer Featuring White Toner

The VersaLink® C8000W Color Printer featuring white toner helps you offer differentiated prints to your customers to set them apart from their competition. By printing with white toner to accentuate text and by making traditional CMYK images prominent on dark media, VersaLink® C8000W Color Printer helps you stand out from the rest. This helps you print more professional-looking documents that are sure to draw attention. With a small footprint and low price point for such a powerful addition to any designers toolkit, the C8000W Color Printer gives you an edge.

## TECHNOLOGY THAT SETS IT APART

The VersaLink® C8000W Color Printer is supplied with everything you need to support white toner workflows; integral graphics controller, Mac and Windows drivers, and built-in color tables.

The technology used in VersaLink® C8000W Color Printer is White plus Cyan, Magenta, and Yellow, with White being applied to the media first. This delivers impressive results when you print on a range of dark media. For example, white text on dark media brings out the highest quality of the print output. Similarly, printing CMYK images on dark media using White as an underlay lets the colors pop out with stunning quality, opening a world of print possibilities on media never used before.

## OPENING UP WINDOWS OF OPPORTUNITY

When it comes to window signage, printing colors on transparent media without a white underlay makes the output look dull and unreadable. But with VersaLink® C8000W Color Printer, you can now print white underneath the CMY toners. This will make the colors look stunning and allow you to print and display professional-grade images on windows and capture your customers' attention.



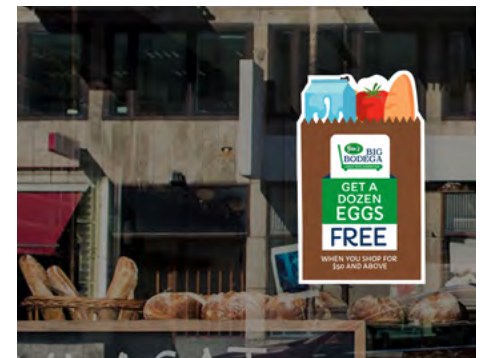
## GET CREATIVE, DO MORE, AND EARN MORE

Open your print shop to new and existing customers offering new ways of differentiation for their print. Be it wedding invitations, restaurant menus, or banners—print them all, make them look spectacular, and impress your customers with the use of media not available to you before. This boosts the range of services that you can offer to your customers and opens up more revenue streams for your business.

## ADD AWESOME STYLE AND SUPERIOR QUALITY TO YOUR OUTPUT

The VersaLink® C8000W Color Printer can be used to enhance the prints for any business from adding eye-popping window signage, to incredible bright images on specialty media for delivering your messages in a more professional and impactful way.

- Dark and colored media printing
- Dark and colored envelope printing
- Window signs, decals, and labels





# Introducing Xerox® VersaLink® C8000W Color Printer Featuring White Toner



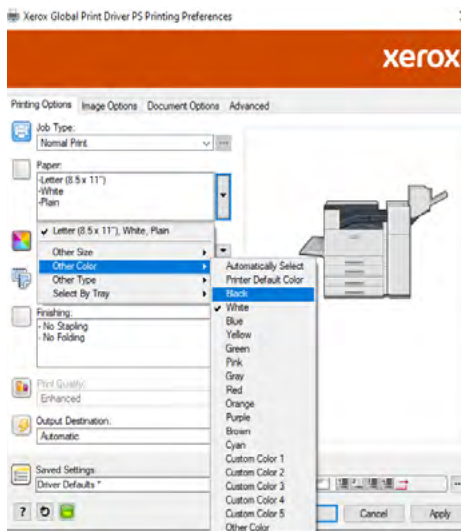
VersaLink® C8000W plus Two Tray Module

## APPLICATIONS

The VersaLink® C8000W Color Printer is designed for a variety of users – general office suite users, designers, and others who may not have the required skills in advanced graphics software.

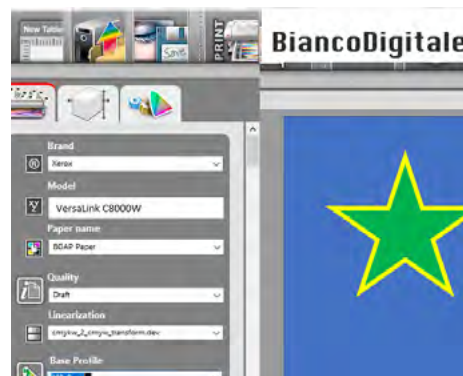
### WHITE TEXT AND GRAPHICS FOR OFFICE SUITE USERS

Use the supplied Windows and Mac driver to select up to 12 media colors and print to the device from your normal Microsoft Applications. Select a white font color, and you are done. For example, create a white text menu on dark media for professional-grade image output to set your customer's restaurant apart from the competition.



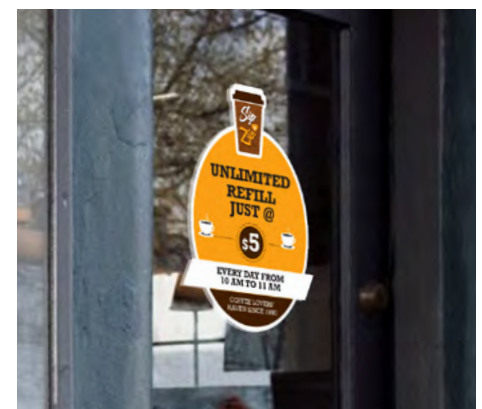
### FULL GRAPHICS FEATURING WHITE TONER FOR ALL USERS

With the use of optional software like BiancoDigitale, users can easily import PDFs, Photoshop files, or bitmap graphics like a JPEG or BMP, and quickly create output for the VersaLink® C8000W Color Printer featuring white toner. Select the media color you want to use, and the software will automatically transpose any black toner to white and automatically apply white as an underlay to your CMYK images. The output is customized for each media color, and thus, incredible print quality is delivered quickly and easily without the need to be a designer.

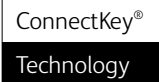


### DESIGNERS

Designers using the Adobe suite will delight in being able to take full advantage of today's new and innovative dark and colored papers, envelopes, and synthetic substrates. Other devices can only print on basic white paper and media, whereas the VersaLink® C8000W Color Printer opens this whole new world of media. Designing an image with 'white in mind', and by incorporating some simple design techniques, the VersaLink® C8000W Color Printer will automatically apply white as an underlay to give stunning results on your chosen media.



# Xerox® VersaLink® C8000W Color Printer Featuring White Toner



The VersaLink® C8000W Color Printer featuring white toner is the low-cost entry point to a world of new print applications. For more information, visit [www.xerox.com/C8000W](http://www.xerox.com/C8000W).

DEVICE SPECIFICATION		VERSALINK® C8000W
Speed <sup>1</sup>		Up to 45 ppm letter/A4
Monthly Duty Cycle <sup>2</sup>		205,000
Hard Drive/Processor/Memory		Optional 320 GB HDD/1.6 GHz/4 GB
Connectivity		Ethernet 10/100/1000 Base-T, High-speed USB 3.0, Wi-Fi® and Wi-Fi Direct® with optional Wi-Fi Kit, NFC Tap-to-Pair
Controller Features		Configuration Cloning, Xerox Extensible Interface Platform®, Xerox® App Gallery App, Xerox® Standard Accounting Tool, Role Based Permissions, Convenience Authentication Enabled
Print Resolution		Up to 1200 x 2400 dpi
First-print-out Time		As fast as 15 seconds color/14 seconds monochrome
Page Description Languages		Adobe® PostScript® 3™
Color Management		Xerox Color Corrections, Xerox Color Management to allow near-WYSIWYG output on 12 different media colors
Paper Input	Standard	<b>Bypass Tray:</b> Up to 100 sheets; Custom sizes: 3.5 x 3.9 in. to 12.6 x 19 in./88.9 x 98.4 mm to 320 x 482.6 mm; Banners: 12.6 x 52 in./320 x 1,320.8 mm (64 to 300 gsm) <b>Tray 1:</b> Up to 520 sheets; Custom sizes: 3.9 x 5.8 in. to 11.7 x 17 in./100 x 148 mm to 297 x 431.8 mm (64 to 300 gsm) <b>Tray 2:</b> Up to 520 sheets; Custom sizes: 3.9 x 5.8 in. to 12.6 x 18 in./100 x 148 mm to 320 x 457.2 mm (64 to 300 gsm)
	Optional	<b>Two Tray Module:</b> Up to 1,040 sheets; Custom sizes: 3.9 x 5.8 in. to 12.6 x 18 in./100 x 148 mm to 320 x 457.2 mm (64 to 300 gsm) <b>Tandem Tray Module:</b> Up to 2,000 sheets; 8.5 x 11 in., 7.25 x 10.5 in./A4, B5 (64 to 300 gsm) <b>High Capacity Feeder:</b> Up to 2,000 sheets; 8.5 x 11 in., 7.25 x 10.5 in./A4, B5 (64 to 216 gsm) <b>Envelope Tray (replaces Tray 1):</b> Up to 50 envelopes: #10 Commercial, Monarch, DL, C4, C5, C6 (75 to 90 gsm)
Paper Output/Finishing	Standard	<b>Dual Offset Catch Tray</b> (standard when finishers are not attached): 250 sheets each
	Optional	<b>Office Finisher:</b> 2,000-sheet stacker, 50 sheets stapled, 3-position stapling, optional hole punch, optional booklet maker (score, saddle stitch) <b>BR Booklet Maker Finisher:</b> 1,500-sheet stacker and 500-sheet top tray, 50-sheet multiposition stapling and 2/3-hole punching plus saddle-stitch booklet making (2 to 16 sheets, 64 pages) and V-folding
Automatic Two-sided Printing		Standard
<b>INTUITIVE USER EXPERIENCE</b>		
Customize and Personalize		Walkup customization, Personalize Home Screen by User, Multiple Home Screens with Simple ID, Customize by Site, Function or Workflow with Xerox App Gallery and Xerox App Studio
Print Drivers		Job Identification, Bi-directional Status, Job Monitoring and Xerox® Global Print Driver®
Xerox® Embedded Web Server		PC or mobile—Status Information, Responsive Design, Settings, Device Management, Cloning
Remote Console		Remote Control Panel
Print Features		Secure Print, Sample Set, Personal Print, Saved Job, Earth Smart Driver Settings, Job Identification, Booklet Creation, Store and Recall Driver Settings, Bi-directional Real-time Status, Scaling, Job Monitoring, Application Defaults, Two-sided Printing, Skip Blank Pages, Draft Mode
<b>BENCHMARK SECURITY</b>		
Network Security		IPsec, HTTPS, Network Authentication, SNMPv3, SSL/TLS, Security Certificates, Pre-installed Self-signed Certificates
Device Access		Firmware Verification, User access and internal firewall, Port/IP/Domain Filtering, Audit Log, Access Controls, User Permissions, Xerox® Integrated RFID Card Reader, Trusted Platform Module (TPM)
Data Protection		Setup/Security Wizards, Job Level Encryption via HTTPS/IPPS submission, Encrypted hard disk (AES 256-bit, FIPS 140-2) and image overwrite <sup>3</sup> , Encrypted Apps with Embedded Certificate Support
Document Security		Secure Print
<b>ENABLES NEXT GENERATION SERVICES</b>		
Print Management		Xerox® Standard Accounting; <b>Optional:</b> Xerox® Workplace Cloud/Suite, Nuance Equitrac, Ysoft SafeQ, PaperCut and more at <a href="http://www.xerox.com/PrintManagement">www.xerox.com/PrintManagement</a> .
Managing Print		Xerox® Device Manager, Xerox® Support Assistant App, Auto Meter Read, Managed Print Services tools
Sustainability		Cisco EnergyWise®, Earth Smart Printing, EPEAT-verified, Print User ID on margins
<b>GATEWAY TO NEW POSSIBILITIES</b>		
Xerox App Gallery		Many apps and cloud services available. Visit <a href="http://www.xerox.com/appgallery">www.xerox.com/appgallery</a> for a growing selection of Xerox® apps available for adding functions.

<sup>1</sup> Declared print speed in accordance with ISO/IEC 24734. <sup>2</sup> Maximum volume capacity expected in any one month. Not expected to be sustained on a regular basis; <sup>3</sup> HDD required for image overwrite.

## Certifications

To view the latest list of certifications, go to [www.xerox.com/OfficeCertifications](http://www.xerox.com/OfficeCertifications).

## Supplies

Standard Capacity Toner Cartridges for C8000W:

White 5K pages <sup>4</sup>	106R04646
Cyan: 7,600 pages <sup>5</sup>	106R04034
Magenta: 7,600 pages <sup>5</sup>	106R04035
Yellow: 7,600 pages <sup>5</sup>	106R04036

High Capacity Toner Cartridges for C8000W:

Cyan: 16,500 pages <sup>5</sup>	106R04046
Magenta: 16,500 pages <sup>5</sup>	106R04047
Yellow: 16,500 pages <sup>5</sup>	106R04048

## Routine Maintenance Items:

Drum Cartridge: 210,000 pages each color <sup>6/7</sup>	101R00602
240,000 pages White only <sup>6</sup>	108R01504
Waste Cartridge: Up to 30,400 pages <sup>6</sup>	104R00256
IBT Cleaner: Up to 160,000 pages <sup>6</sup>	116R00015
Transfer Roller: Up to 200,000 pages <sup>6</sup>	

## Options

Two Tray Module	097S04969
Tandem Tray Module	097S04970
High Capacity Feeder	097S04845
Envelope Tray (Replaces Tray 1)	497K17880
Office Finisher	097S05019
2/3 Hole Punch for Office Finisher	497K20600
Booklet Maker for Office Finisher	497K20590

## BR Finisher with Booklet Maker

(requires horizontal transport kit)	097S04981
Horizontal Transport Kit for BR Finisher	497K17440
HDD (320 GB Hard Drive)	097S04971
Wireless Network Adapter (Wi-Fi Kit)	497K16750
Internal Card Reader/RFID Kit	497K18120
Bianco Digitale SW Kit	497N07139

<sup>4</sup> 5% coverage

<sup>5</sup> Average standard pages. Declared yield in accordance with ISO/IEC 19798. Yield will vary based on image, area coverage and print mode.

<sup>6</sup> Approximate pages. Declared yield will vary depending on job run length, media size/orientation and machine speed.

For more information, visit <http://www.office.xerox.com/latest/SUPGL-01.PDF>. Configurations vary by geographical location.

For more detailed specifications, go to [www.xerox.com/C8000W](http://www.xerox.com/C8000W).

© 2020 Xerox Corporation. All rights reserved. Xerox®, ConnectKey®, Global Print Driver®, VersaLink®, and Xerox Extensible Interface Platform® are trademarks of Xerox Corporation in the United States and/or other countries. The information in this brochure is subject to change without notice. 10/20 TSK-1015 BR32076 VC8BR-02UB

