



Desktop Printers

DT2x / DT4x

Discover how powerful a Simple of Compact Barcode Printer can be.

DT2x / DT4x are both ultra-light, compact for best space utilization and support multiple communication ports; they are effective and multitasking for printing retail, warehouses, logistic & transportation, health care labels and tags.



Enhanced label feeding mechanism and instant label detection.



- 16MB SDRAM and 4 MB Flash memory - including 2 MB user-available memory storage for downloadable objects.
- Print speed : Up to 7"/177 mm per second.
- Supports Ethernet, Serial and USB ports.

GoDEX

Specification

DT2x / DT4x

Desktop Printer

Model	DT2x	DT4x
Print Method	Direct Thermal	
Resolution	203 dpi (8 dots/mm)	
Print Speed	7 IPS (177 mm/s)**	
Print Width	2.12" (54 mm)	4.25" (108 mm)
Print Length	Min. 0.16" (4 mm)**; Max. 68" (1727 mm)	
Processor	32 Bit RISC CPU	
Memory Flash	4 MB Flash (2 MB for user storage)	8 MB Flash (4 MB for user storage)
SDRAM	16 MB	
Sensor Type	Adjustable reflective sensor.	Adjustable reflective sensor. Fixed transmissive sensor, central aligned.
Media Types	Continuous form, gap labels, black mark sensing, and punched hole; label length set by auto sensing or programming	
Width	Min. 0.6" (15 mm) – Max. 2.36" (60 mm)	Min. 1" (25.4 mm) – Max. 4.64" (118 mm)
Thickness	Min. 0.003" (0.06 mm) – Max. 0.008" (0.20 mm)	
Label Roll Diameter	Max. 5" (127 mm)	
Core Diameter	1" (25.4 mm), 1.5" (38.1mm)	
Printer Language	EZPL, GEPL, GZPL auto switch	
Software Label Design Software	GoLabel (for EZPL only)	
Driver	MAC, Linux, Windows 2000 / XP / VISTA / Windows 7 / Windows 8.1	
DLL	Win CE, .NET, Android, Windows Mobile, Windows 2000 / XP / VISTA / Windows 7 / Windows 8.1	
Resident Fonts Bitmap Fonts	6, 8, 10, 12, 14, 18, 24, 30, 16X26 and OCR A & B Bitmap fonts 90°, 180°, 270° rotatable, single characters 90°, 180°, 270° rotatable Bitmap fonts 8 times expandable in horizontal and vertical directions	
TTF Fonts	CG Triumvirate™ (Bold / Italic / Underline), 0°, 90°, 180°, 270° rotatable	
Download Fonts Bitmap Fonts	90°, 180°, 270° rotatable, single characters 90°, 180°, 270° rotatable	
Asian Fonts	16x16, 24x24, Traditional Chinese (BIG-5), Simplified Chinese (GB2312), Japanese (S-JIS), Korean (KS-X1001)	
TTF Fonts	90°, 180°, 270° rotatable and 8 times expandable in horizontal and vertical directions	
Barcodes 1-D Bar codes	Code 39, Code 93, EAN 8 /13 (add on 2 & 5), UPC A / E (add on 2 & 5), I 2 of 5 & I 2 of 5 with Shipping Bearer Bars, Codabar, Code 128 (subset A, B, C), EAN 128, RPS 128, UCC 128, UCC / EAN-128 K-Mart, Random Weight, Post NET, ITF 14, China Postal Code, HIBC, MSI, Plessey, Telepen, FIM, GS1 DataBar, German Post Code, Planet 11 & 13 digit, Japanese Postnet, I 2 of 5 with human readable check digit, Standard 2 of 5, Industrial 2 of 5, Logmars, Code 11, Code 49 and Cadablock	
2-D Bar codes	PDF417, Datamatrix code, MaxiCode, QR code, Micro PDF417, Micro QR code and Aztec code.	
Code Pages	CODEPAGE 437, 850, 851, 852, 855, 857, 860, 861, 862, 863, 865, 866, 869, 737 WINDOWS 1250, 1251, 1252, 1253, 1254, 1255, 1257 Unicode UTF8 \ UTF16BE \ UTF16LE	
Graphics	Resident graphic file types are BMP and PCX, other graphic formats are downloadable from the software	
Interfaces	USB 2.0 (B-Type) Serial port: RS-232 (DB-9) IEEE 802.3 10 / 100 Base-Tx Ethernet port (RJ-45)	
Control Panel	One Tri-color LED : Power (Green, Orange and Red) Function Key : FEED	
Power	Auto Switching 100-240V AC, 50-60Hz.	
Real Time Clock	Standard	
Environment Operation Temperature	41°F to 104°F (5°C to 40°C)	
Storage Temperature	-4°F to 122°F (-20°C to 50°C)	
Humidity Operation	30-85%, non-condensing.	
Storage	10-90%, non-condensing.	
Agency Approvals	CE (EMC), FCC Class A, CB, CCC, cUL	
Dimension Length	8.58" (218 mm)	8.58" (218 mm)
Height	6.77" (172 mm)	6.53" (166 mm)
Width	3.94" (100 mm)	6.61" (168 mm)
Weight	2.65 lbs (1.2 Kg) ,excluding consumables	3.3 lbs (1.5 Kg) ,excluding consumables
Options & Accessories	Cutter module Label Dispenser External label roll holder for 10" (250 mm) O.D. label rolls External label rewinder	

**Specifications are subject to change without notice. All company and/or product names are trademarks and/or registered trademarks of their respective owners.

Minimum print height and maximum print speed specification compliance can be dependent on non-standard material variables such as label type, thickness, spacing, liner construction, etc. Godex is pleased to test non-standard materials for minimum print height and maximum print speed capability.

Applications

Applications for Labels & Barcodes

DT2x / DT4x are the ultimate tool for barcode printings in any industry.



Warehouses, Logistic & Transportation

Shelf labels, product serial number labels, inventory management, shipping labels, pallet labels, carton labels, etc.

Health Care

Tube tags, pharmaceutical labels, patient identification, medical records and laboratory specimen tags.

Retail

Price tags, content labels, jewelry labels, courier tracking label, receipts for registered mails, bills of landing (B / L), postage labels, etc.

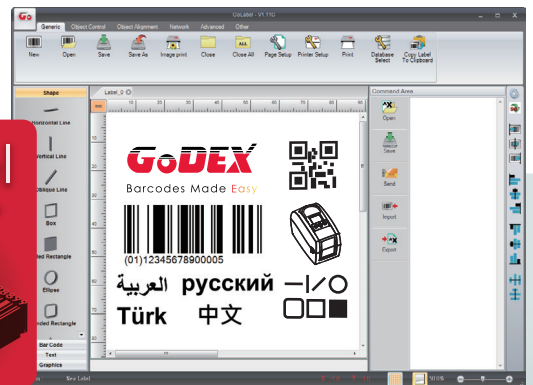
GoDEX

LABEL DESIGN SOFTWARE

GoLabel Software / User Friendly

GoLabel is based on a WYSIWYG (what you see is what you get) user interface, makes everything so easy for you to create and print barcode labels. GoLabel is the first-choice label design software that you can't miss it!

Go visit www.godexintl.com and download GoLabel to experience it!



GoDEX

RIBBONS

High quality original GoDEX thermal transfer ribbons

GoDEX offers premium thermal transfer ribbons that will fit most of your printing applications.

- Wax
- Wax/ Resin
- Resin
- Near Edge

