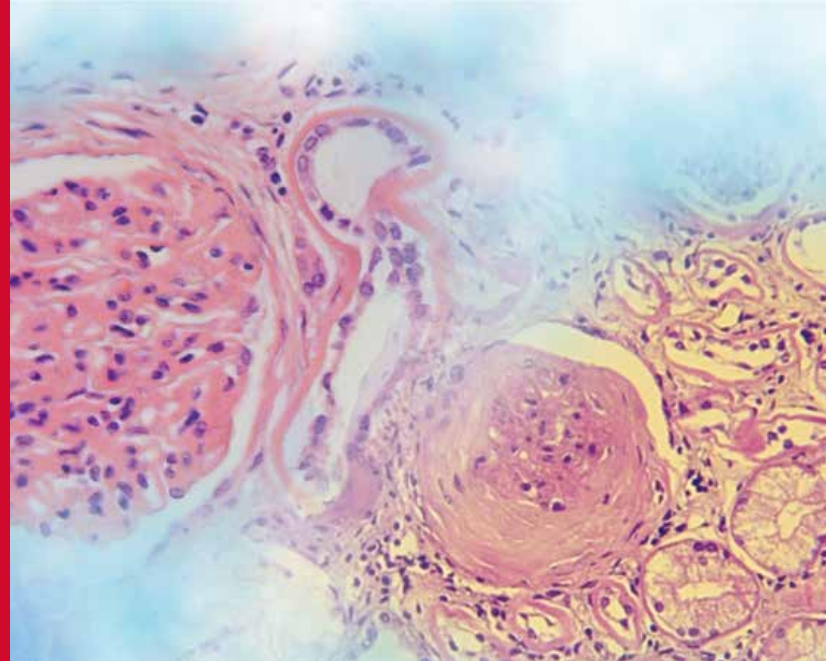


*Histology Innovation for a NEW Generation*

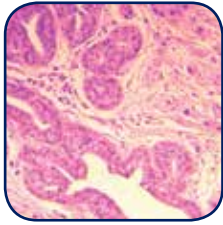
**Ready-To-Use Reagents, Dyes & Stains**

## **Routine Stains & Special Stains**



**Single Source For Your Histology Reagents.  
Protecting Every Life Story In Your Lab.**

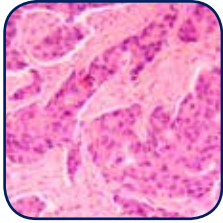
Each tissue specimen your lab processes has a life story behind it. Your mission is to ensure all your specimens receive optimal processing in order to deliver the best possible care. Our product line of histological reagents, dyes and ready-to-use stains enable your lab to deliver increased productivity, advanced specimen safety and provide highly accurate processing and staining results.



## Eosin Y, 1.0% alcoholic solution, Non-Acidic

Cytoplasmic counterstain useful in immuno-histochemistry or treatment of tissue sections with hematoxylin. Contains no acetic acid. Ready-to-use with any automated stainer.

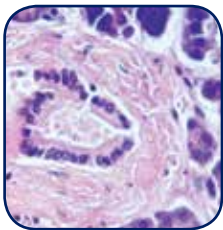
Cat. #	Description
E-1Y1P	Eosin Y, 1%, 16 oz/ea; See MSDS for HAZ-MAT handling requirements under transportation on Air Shipments; Store at 25° C
E-YP50GR	Eosin Y Certified Powder, 50gm/ea. See MSDS for HAZ-MAT handling requirements under transportation on Air Shipments; Store at 25°C



## Gill's #2, double strength for Histology & Cytology

Used when a stronger or darker nuclear stain is required for cytology or immunohistochemistry (IHC) counterstaining. Gill's #2 formulation is a double strength mixture, stains darker and more quickly than Gill's #1. General purpose nuclear stain, progressive type. Used with hematoxylin and eosin staining.

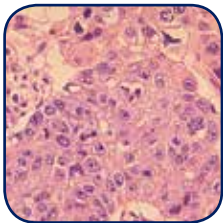
Cat. #	Description
H-G21L	Gills 2 Hematoxylin, 1L/ea. See MSDS for HAZ-MAT handling requirements under transportation on Air Shipments; Store at room temp.



## Gill's #3, triple strength for Histology

Appropriate for routine histology staining where a darker nuclear stain is desired. This is a triple strength formula requiring shorter staining times. Formula is very stable and does not require filtering prior to each use. General purpose nuclear stain, progressive type. Used with hematoxylin and eosin staining.

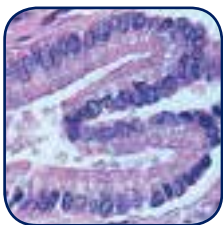
Cat. #	Description
H-G31-L	Gills-3 Hematoxylin, 1L/ea. See MSDS for HAZ-MAT handling requirements under transportation on Air Shipments; Store at 25°C



## Harris Hematoxylin, Acidified (mercury-free)

Used with hematoxylin and eosin staining. Use Harris Hematoxylin for routine histology and cytology. Similar results can be achieved to those of Gill's Hematoxylin #1, #2 and #3 formulations by varying staining times. General purpose nuclear stain, regressive type.

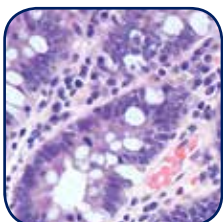
Cat. #	Description
H-HAMF-1P	Harris Hematoxylin, Acidified, Mercury free, 500ml/ea. See MSDS for HAZ-MAT handling requirements under transportation on Air Shipments; Store at 25°C



## Lithium Blue

Lithium Blue is a gentle yet rapid formulation for bluing hematoxylin in only 5 minutes. Lithium Blue is buffered at an alkalinity of pH 8.0. Our premixed and ready-to-use Lithium Blue provides crisp nuclear detail obtained with Gills, Mayer's and Harris' Hematoxylin stains. For use in both cytology and histology.

Cat. #	Description
L-B1G	Lithium Blue, Buffered, 8.0ph, 1gal/ea. See MSDS for HAZ-MAT handling requirements under transportation on Air Shipments; Store at room temp.

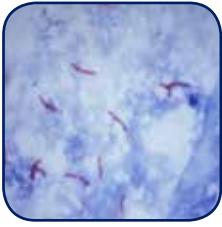


## Scott's Bluing Reagent

Gentle bluing reagent formulation for those specimens that may be affected by more harsh agents. Our premixed and ready-to-use Scott's Bluing Reagent provides rapid bluing and crisp nuclear detail obtained with routine hematoxylin and eosin stains. For use in both cytology and histology.

Cat. #	Description
R-SB1G	Scotts Bluing Reagent, 1gal/ea. See MSDS for HAZ-MAT handling requirements under transportation on Air Shipments; Store at room temp.

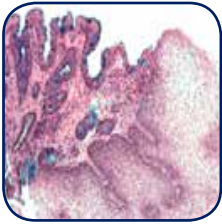
## SPECIAL STAINS



### AFB Ziehl Neelson Kit (Hot Method)

Used to identify acid-fast organisms, mainly Mycobacteria. Helpful in diagnosing Mycobacterium tuberculosis since its lipid rich cell wall makes it resistant to Gram stain. Also stains other bacteria like Nocardia. Acid-fast bacilli stain bright red, non-acid fast organisms stain blue or green.

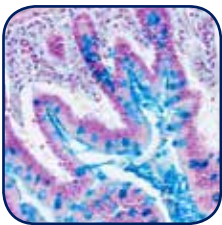
Cat. #	Description
SPS-ZN	AFB Ziehl Neelson Kit (Hot Method). Size: 1 kit (8oz.)
	<b>RESULTS:</b> <b>Acid-fast Bacilli:</b> Bright Red <b>Background:</b> Blue



### Alcian Blue Pas Stain Kit

Used for staining the acetic mucins and acid mucous substances.

Cat. #	Description
SPS-ABP	Alcian Blue Pas Stain Kit. Size: 500ml/ea
	<b>RESULTS:</b> <b>Acidic Mucins:</b> Blue <b>Neutral Mucins:</b> Magenta <b>Mixtures of above:</b> Blue/Purple



### Colloidal Iron Stain Kit

A colloidal ferric oxide treatment for the demonstration of acid polysaccharides.

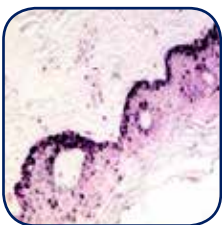
Cat. #	Description
SPS-CI	Colloidal Iron Stain Kit. Size: 500ml/ea
	<b>RESULTS:</b> <b>Acid Mucopolysaccharides and Sialomucins:</b> Deep Blue <b>Nuclei:</b> Pink-Red <b>Cytoplasm:</b> Pink



### Differential Quik Stain Kit (Modified Giemsa)

High quality, rapid turnaround staining kit. Useful for differential assessment of blood smears, detecting H. pylori microorganisms and immediate interpretation of fine needle aspiration biopsies. Kit contains a fixative for air-dried cell suspensions and/or touch preparation slides. Results in as little as 10-15 seconds!

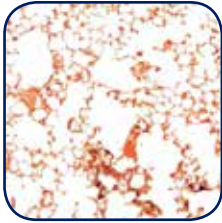
Cat. #	Description
SPS-MG	Differential Quik Stain Kit (Modified Giemsa). Size: 500ml/ea
	<b>RESULTS:</b> <b>Erythrocytes:</b> Pink/Yellowish Red; <b>Platelets:</b> Dark Blue/Violet/Purple Granules; <b>Neutrophils:</b> Blue Nucleus, Pink Cytoplasm, Purple Granules; <b>Eosinophils:</b> Blue Nucleus, Blue Cytoplasm, Red Granules; <b>Basophils:</b> Dark Blue Purple Nucleus, Purple Granules; <b>Monocytes:</b> Purple Nucleus, Light Blue Cytoplasm; <b>Bacteria/Microorganisms:</b> Deep Blue, vary in shape; <b>Collagen, Cytoplasm &amp; Muscle:</b> Various shades of Pink, Blue, Orange & Yellow



### Fontana Masson Stain Kit

Use in the histological visualization of Argentaffin cells. Also meant for use in the visualization of Melanin in paraffin or frozen sections.

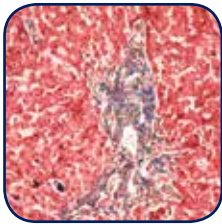
Cat. #	Description
SPS-F	Fontana Massons Stain Kit. Kit includes: 100ml/ea. Ammonium Hydroxide and 500ml/ea. of Silver Nitrate, Gold Chloride, and Nuclear Fast Red in nalgene bottles.
	<b>RESULTS:</b> <b>Argentaffin Cells:</b> Black, <b>Melanin:</b> Black, <b>Nuclei:</b> Red, <b>Cytoplasm:</b> Light Pink



### Gram's Stain Kit (with Iodine)

Used to stain microorganisms from cultures or specimens by the differential Gram method. Separates bacterial species into two large groups, those that retain the primary dye (gram-positive) and those that lose the primary dye and take the color of the secondary dye (gram-negative). The mechanism of gram stain is based on the distinctive chemistry and physical properties of the cell wall.

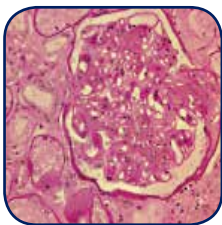
Cat. #	Description
SPS-GSI	Gram's Stain Kit (with Iodine). Size: 1 kit (1 gal.)
<b>RESULTS:</b> Gram-positive cells will appear Blue to Purple, while Gram-negative cells will appear Pink to Red.	



### Masson's Trichrome Stain Kit

This method is used for the detection of collagen fibers in tissues such as skin, heart, etc. on formalin-fixed, paraffin-embedded sections and may be used for frozen sections as well. Collagen fibers stained blue and nuclei stained black.

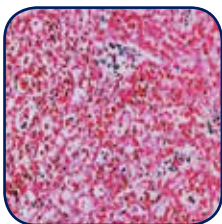
Cat. #	Description
SPS-MTS	Masson's Trichrome Stain Kit. Size: 1 kit (250/500ml.)
<b>RESULTS:</b> Glycogen: Red Nuclei - Blue	



### Periodic Acid Schiff's (PAS) Stain Kit

Used to demonstrate polysaccharides, neutral mucosubstances and basement membranes primarily in tissue. The demonstration of glycogen is best represented by a section of liver with a digestion step used as a negative control in the staining. Kit is supplied with Harris Hematoxylin Acidified as the counterstain.

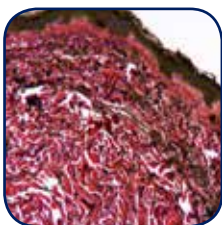
Cat. #	Description
SPS-PAS	Periodic Acid Schiff's (PAS) Stain Kit. Size: 1 kit (250ml.)
<b>RESULTS:</b> Nuclei: Black Cytoplasm, Muscle, Erythrocytes: Red Collagen: Blue	



### Prussian Blue Iron Stain Kit (Reaction for the Demostration of Iron)

Histochemical reaction used to demonstrate ferric iron and ferritin. This is not a true staining technique. Protein is split off by the hydrochloric acid, allowing the potassium ferrocyanide to combine with the ferric iron. This forms the ferric ferrocyanide or Prussian Blue. 10% NBF or alcohol can be used. Deparaffinize slides through xylene or substitute to remove paraffin from the section and descending grades of alcohol to water just prior to staining.

Cat. #	Description
SPS-PBI	Prussian Blue Iron Stain Kit (Reaction for the Demostration of Iron. Size: 1 kit (250ml.)
<b>RESULTS:</b> Iron (hemosiderin): Blue Nuclei: Red Background: Pink	



### Verhoeff Van Gleson Elastin Stain Kit

Useful in demonstrating atrophy of elastic tissue in cases of emphysema, thinning and loss of elastic fibers in arteriosclerosis and other vascular diseases. With aging, changes such as splitting and fragmentation occur, these changes are most obvious in the skin which becomes wrinkled and rather loose-fitting.

Cat. #	Description
SPS-GE	Verhoeff Van Gleson Elastin Stain Kit. Size: 1 kit (500ml.)
<b>RESULTS:</b> Elastic Fibers & Nuclei: <b>Black</b> Collagen: <b>Red</b> Other Tissue Elements: <b>Yellow</b>	

# DEHYDRATION AND CLEANING REAGENTS



## Dehydrants

Perfect for virtually all preparing and staining strategies in the lab.

Cat. #	Description
A-100RA	Reagent Alcohol, 100% – SDA 3A, 95%, Isopropyl 5%; ACS/USP Grade; 1Gal/ea, 4ea/cs
A-95RA	Reagent Alcohol, 95% – SDA 3A, 95%, Isopropyl 5%; ACS/USP Grade; 1Gal/ea, 4ea/cs
A-5050RA	SHURBlend™ Reagent Alcohol/Isopropyl Alcohol Blend, 1Gal/ea, 4ea/cs
C-X1G	Xylene Clearing Solvent; ACS Grade; 1gal/ea, 4ea/cs; See MSDS for HAZ-MAT handling requirements on Air Shipments
A-I1G	Isopropanol - 99.99%, Isopropyl Alcohol; ACS/USP Grade; 1gal/ea, 4ea/cs; See MSDS for HAZ-MAT handling requirements on Air Shipments



## PARAClear™ - Xylene Substitute

Removes alcohol during the final steps of routine tissue processing

PARAClear™ Xylene Substitute is miscible with paraffin for infiltration, and it has a higher flash point than xylene, reducing the flammability danger to the laboratory.

Cat. #	Description
C-1G	PARAClear™, 1gal/ea; See MSDS for HAZ-MAT handling requirements under transportation on Air Shipments; Store at 25°C



**SS-3030-120**  
SHURStain™ H&E Slide Stainer

**SS-2030-120**  
SHURStain™ Linear Stainer



# ROUTINE SPECIAL STAINS

Depicted below are routine stained tissue, (Bx) processed on the RTPH-360 45 minutes on the RHE (Rapid Heat Exchange) reducing processing by 2.5 - 3 hours.



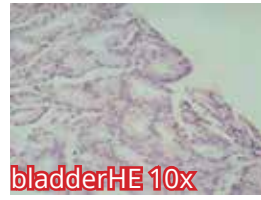
adipose 10xLMC



adipose 40xLMC



AFB Ziehl Neelsen



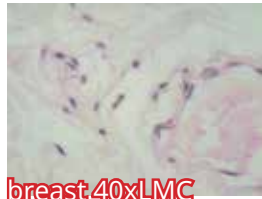
bladderHE 10x



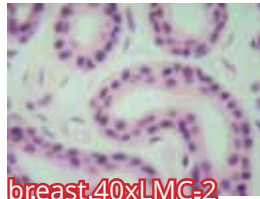
bladderHE 40x



breast 10xLMC



breast 40xLMC



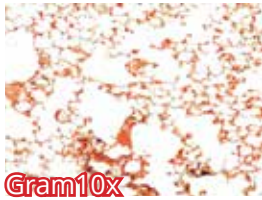
breast 40xLMC-2



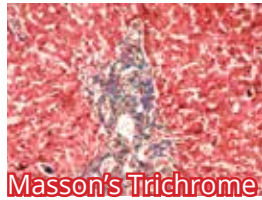
Colloidal Iron Stain



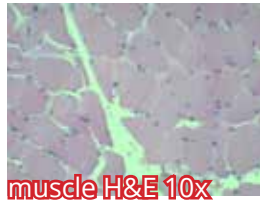
Fontana Masson



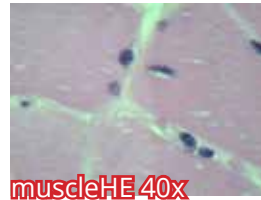
Gram10x



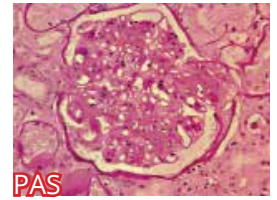
Masson's Trichrome



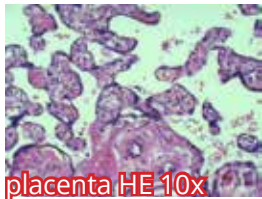
muscle H&E 10x



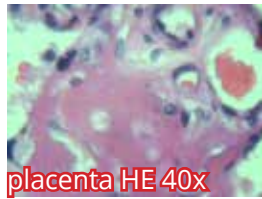
muscleHE 40x



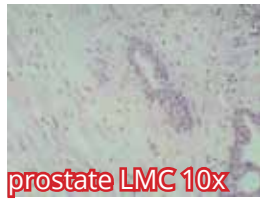
PAS



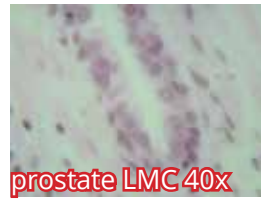
placenta HE 10x



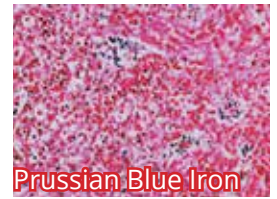
placenta HE 40x



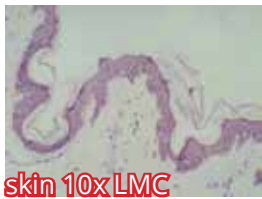
prostate LMC 10x



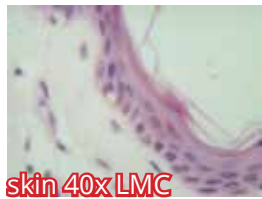
prostate LMC 40x



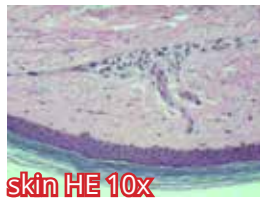
Prussian Blue Iron



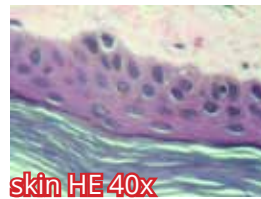
skin 10x LMC



skin 40x LMC



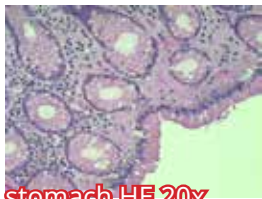
skin HE 10x



skin HE 40x



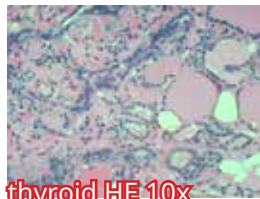
stomach HE 10x



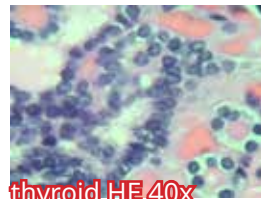
stomach HE 20x



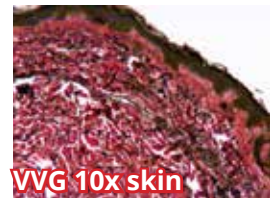
stomach HE 40x



thyroid HE 10x



thyroid HE 40x



VVG 10x skin

AFB: *Mycobacterium tuberculosis* bacteria revealed using acid-fast Ziehl-Neelsen stain; Magnified 1000X. Image courtesy of CDC Public Health Library/Dr. George P. Kubica.

E-329 Modification of Mowrey's 1958 Colloidal Iron stain (Small Intestine) for Acid Mucopolysaccharides using Newcomers control slide and Nuclear fast red counterstain. Done by Ruth Chabot 4/22/2010

*Customer Focus*

- Customer Solutions
- Technical Support

# NEW Company

*Innovation*

- NEW Products
- NEW Solutions
- Proven Technology

# NEW Solutions

*Continuous Improvement*

- Specimen & Employee Safety
- Quality Control
- Certifications

*Reliability*

- Throughput
- Dependability
- Accountability

# NEW Products

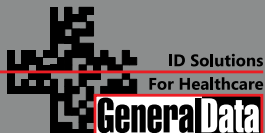
## More Information

**PH: 844.643.1129**

**[www.general-data.com/hc](http://www.general-data.com/hc)**

*General Data Healthcare helps labs enhance productivity and improve workflow with innovative products, solutions and support that focus on delivering better patient safety & care.*

©2014 General Data Healthcare, Inc. All rights reserved. Specifications are current at the time of publication; however, they are subject to change without notification. All trademarks and registered trademarks are property of General Data Healthcare, Inc., Cincinnati, Ohio, USA.



General Data Healthcare, Inc.  
Headquarters: 4354 Ferguson Drive, Cincinnati, OH 45245  
TBS Facility: 3014 Croasdaile Drive, Durham, NC 27705

Sales Inquiries:  
PH: 844.643.1129  
Email: [talktous@general-data.com](mailto:talktous@general-data.com)  
Web: [www.general-data.com/hc](http://www.general-data.com/hc)

Service:  
PH: 800.245.5029  
Email: [customersupport@general-data.com](mailto:customersupport@general-data.com)