



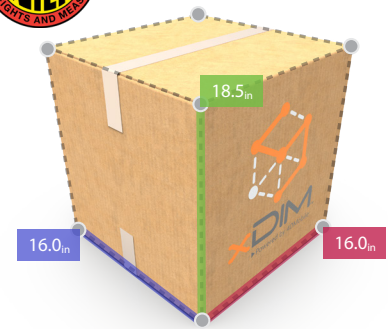
Mobile 3D Dimensioning for Large and Small Boxes

xDIM Mobile is an easy and convenient cloud-based mobile dimensioning system that quickly and accurately determines box dimensions from three inches to 7-8 feet. The NTEP Certified system is designed to help companies increase efficiencies, reduce costs and optimize space with patented software. The ability to easily measure boxes wherever they are enables a more mobile, agile workforce and replaces costly and cumbersome fixed measurement equipment.

A fully rugged tablet from MobileDemand is equipped with Intel® RealSense™ depth camera technology for intuitive point and capture dimensioning, easily producing measurements in seconds. Information is transferred to xDIM Insight, a cloud-based, user-friendly analytics dashboard. Reliable data is then put to work, significantly enhancing slotting, reracking, and Ti-Hi pallet configurations.



Legal for Trade



xDIM incorporates a new 2-step "box face" method to measure large boxes up to 7-8 feet and a "corner" method to measure smaller boxes from 3 to 48-inches. The patented corner method is NTEP Certified as Legal for Trade while the 2-step "box face" method is pending NTEP certification.

(Certificate Number: 21-041)



Increased mobility and agility

- Quickly measure packages wherever they are instead of moving bulky boxes to a stationary scanner
- Conveniently scan with the tablet that moves with you throughout the day



Improve space and time efficiencies

- Enhance slotting in the warehouse
- Speed up re-racking projects
- Improve Ti-Hi pallet configuration



Increase revenue while reducing costs

- Establish cost for services or hire on the basis of measurement
- Reduce shipping chargebacks
- Reduce volume dimension scanning investment costs



Accurately weigh boxes

- Right at their location
- Small and large boxes up to 8 feet
- Bluetooth allows upload of all data



LOAD PLANNING



RERACKING AND SLOTTING



SHIPPING

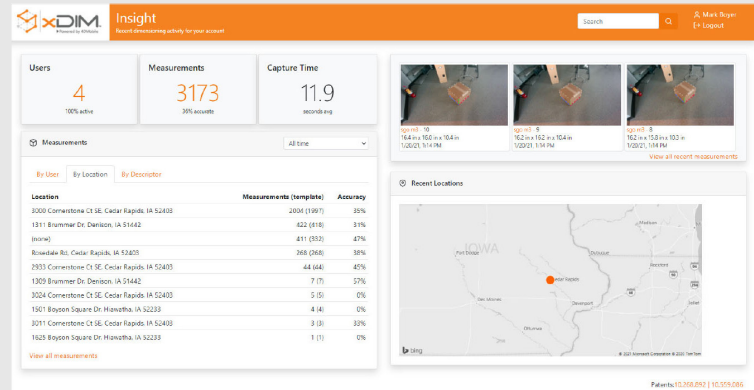


OPERATIONS

A growing number of industries benefit from the convenience of xDIM Mobile software including transportation, supply chain management, logistics, shipping, warehousing and more.

xDIM Data Integration

Easily capture all box measurements, barcoding data and weight and seamlessly integrate all that data with xDIM Insight. The patented data integration tool uploads all that data captured at the box to existing product data measurements systems, warehouse management systems, enterprise resource planning software and other resource management platforms.



3D Camera connectivity

Select MobileDemand rugged tablets and cases are equipped with Intel® RealSense™ depth camera technology for intuitive point and capture dimensioning. We provide two camera options, each with unique characteristics to serve a variety of 3D applications.

Technologies that move business

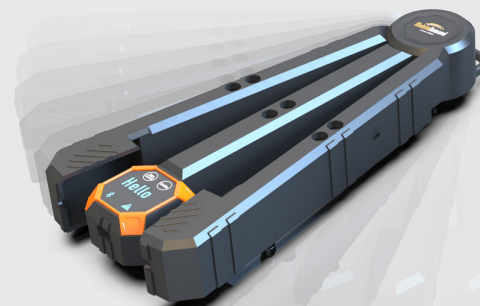
RUGGED MOBILE DEVICES

For optimal performance, xDIM Mobile is sold as a bundled offering with MobileDemand rugged xTablets as well as Microsoft® Designed for Surface® Certified xCases for Surface series tablets.



xDIM COMPATIBLE SCALES

Conveniently capture weight right at the box with battery powered Bluetooth scales. Choose between our lightweight handheld portable xScale S200 or our NTEP certified mobile cart/bench scale options. Capturing and adding weight to your box dimensioning record completes the data collection process.



For more information contact General Data

General Data Company, Inc. | talktous@general-data.com | 844-643-1129 | www.general-data.com

All trademarks are property of their respective owners. | Patent Numbers. 110,268,892 | 10,559,086 | Other patents pending | www.ruggedtabletpc.com/patents